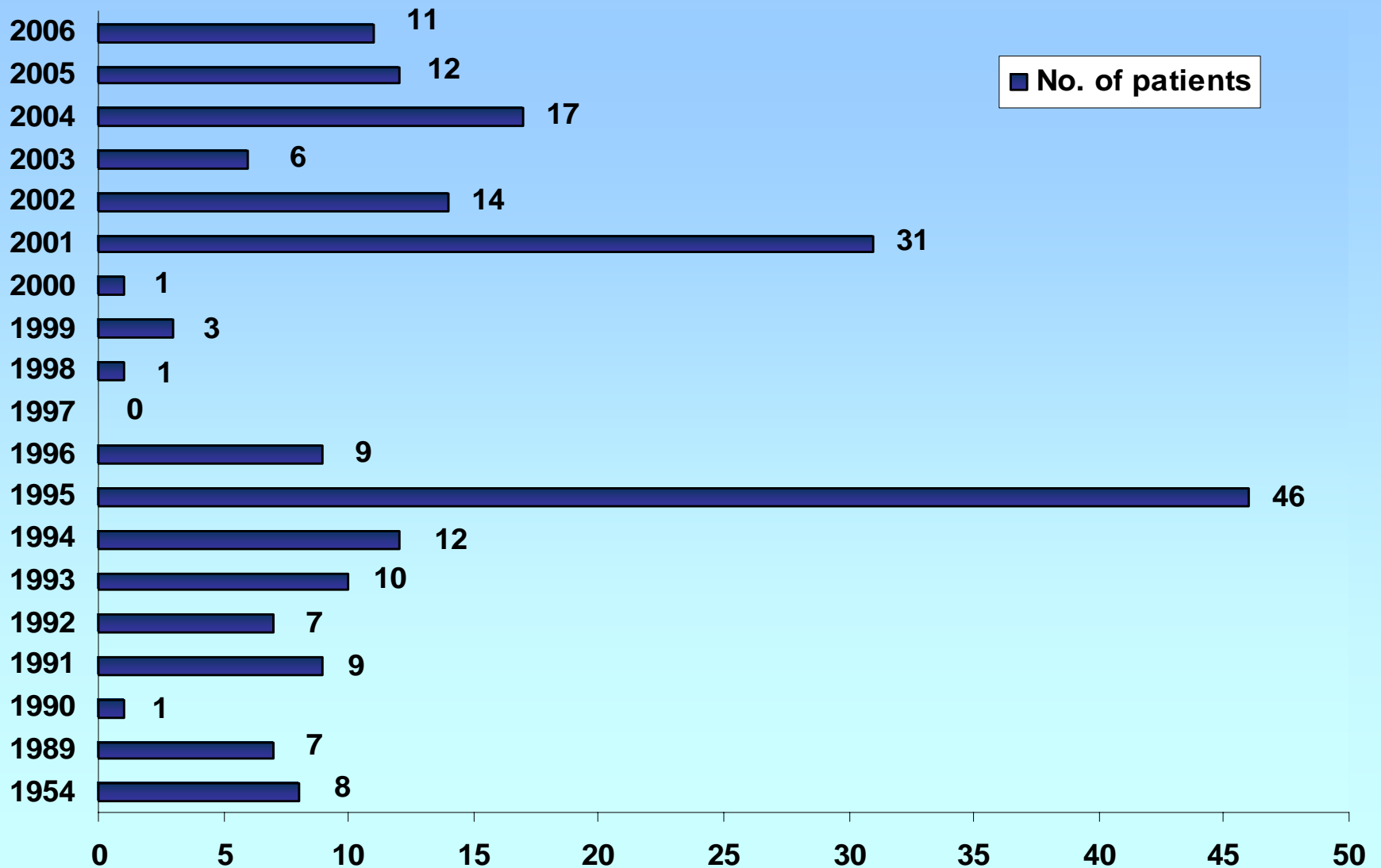


Crimean-Congo Haemorrhagic Fever in Kosova

Prof. dr Salih Ahmeti,
Clinic of Infection Diseases, University
Clinical Centre of Kosova

Number of patients with CCHF by years in Kosovo, 1954-2006



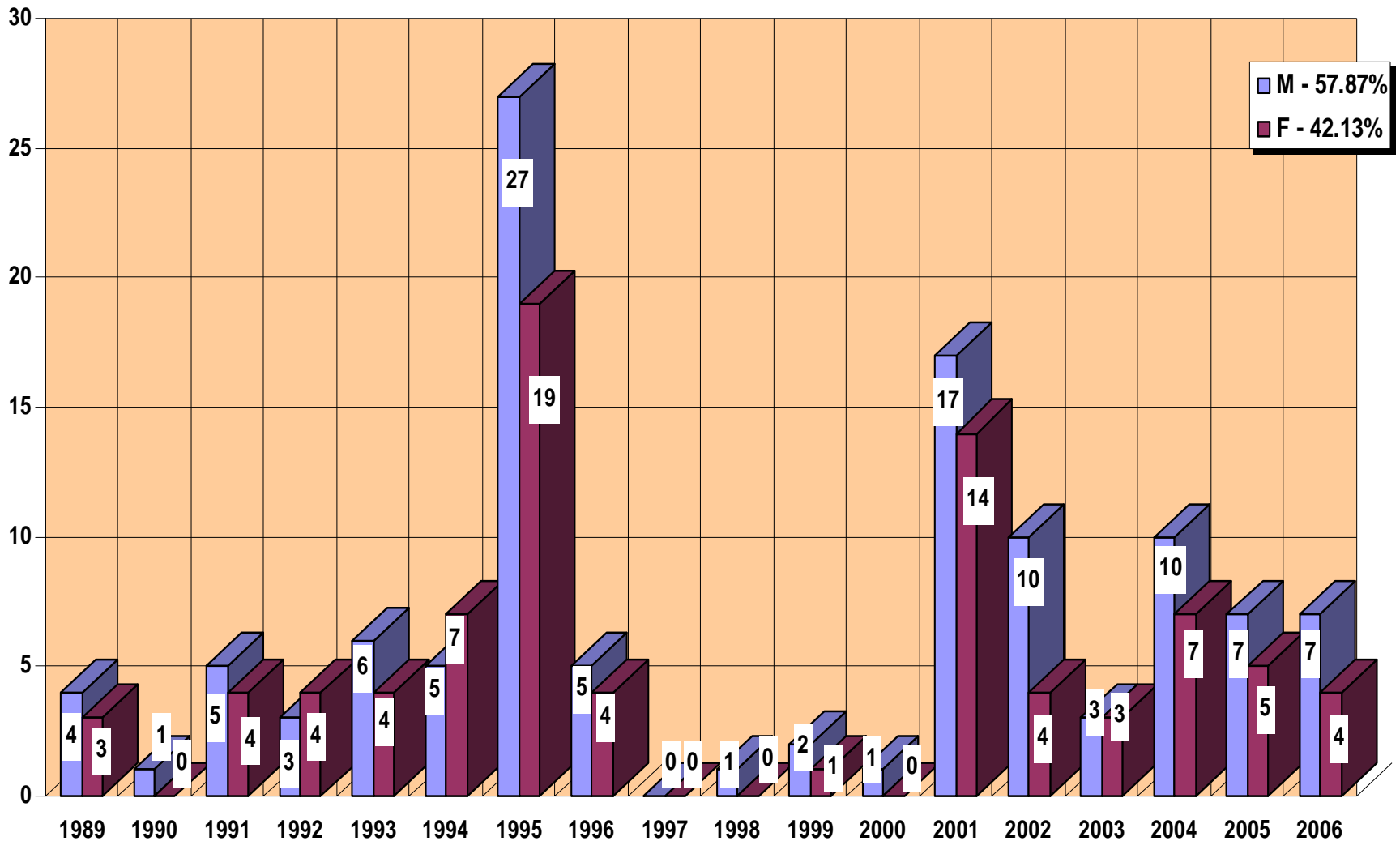
Cases of CCHF by years and months in Kosovo, 1989 – 2006

Year	Month							Total
	March	April	May	June	July	August	September	
1989	-	-	-	1	2	2	2	7
1990	-	-	-	1	-	-	-	1
1991	-	-	1	4	3	1	-	9
1992	-	-	-	3	4	-	-	7
1993	-	-	2	5	2	1	-	10
1994	-	2	2	4	2	1	1	12
1995	1	5	9	14	9	6	2	46
1996	-	-	1	4	4	-	-	9
1997	-	-	-	-	-	-	-	-
1998	-	-	-	1	-	-	-	1
1999	-	-	-	2	1	-	-	3
2000	-	-	-	-	1	-	-	1
2001	-	1	4	11	10	4	1	31
2002	-	2	2	4	3	2	1	14
2003	-	-	-	4	2	-	-	6
2004	1	1	3	7	3	2	-	17
2005	1	1	2	4	3	1	-	12
2006	-	1	1	5	3	1	-	11
Total	3	13	27	74	52	21	7	197
%	1.52	6.60	13.71	37.56	26.40	10.66	3.55	100.00

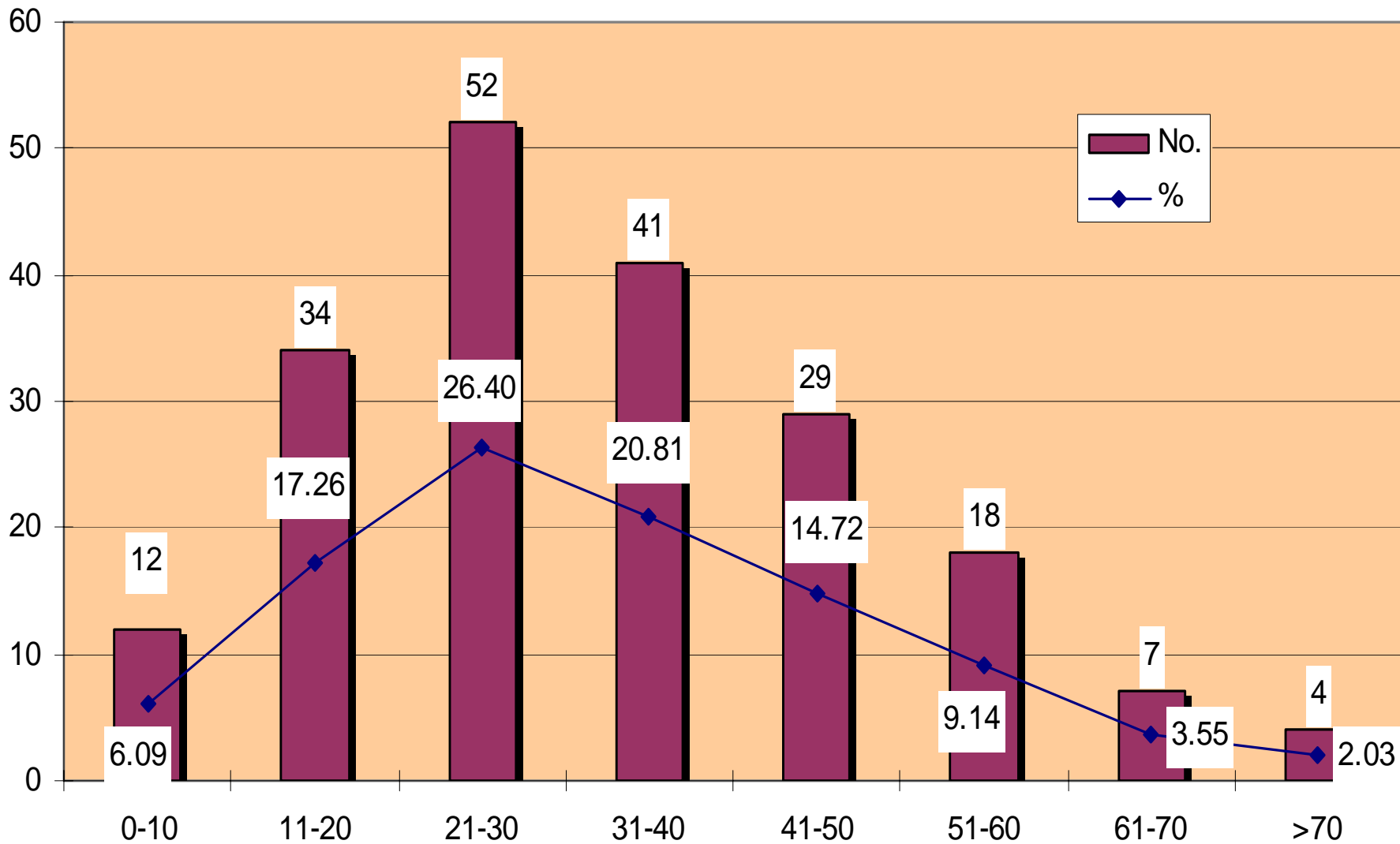
Cases of CCHF by occupation in Kosova, 1989 – 2006

Year	Occupation						Total
	Farmer	Housewife	Pupil	Child	Worker	Health worker	
1989	3	3	1	-	-	-	7
1990	1	-	-	-	-	-	1
1991	5	4	-	-	-	-	9
1992	2	3	1	1	-	-	7
1993	5	3	1	-	1	-	10
1994	4	2	1	2	3	-	12
1995	16	13	6	3	8	-	46
1996	3	2	1	-	3	-	9
1997	-	-	-	-	-	-	0
1998	1	-	-	-	-	-	1
1999	2	-	-	-	1	-	3
2000	1	-	-	-	-	-	1
2001	7	6	5	1	9	3	31
2002	6	4	1	-	3	-	14
2003	2	1	2	-	1	-	6
2004	6	5	4	1	-	1	17
2005	3	4	3	1	1	-	12
2006	3	3	2	1	2	-	11
Total	70	53	28	10	32	4	197
%	35.53	26.90	14.21	5.08	16.24	2.03	100.00

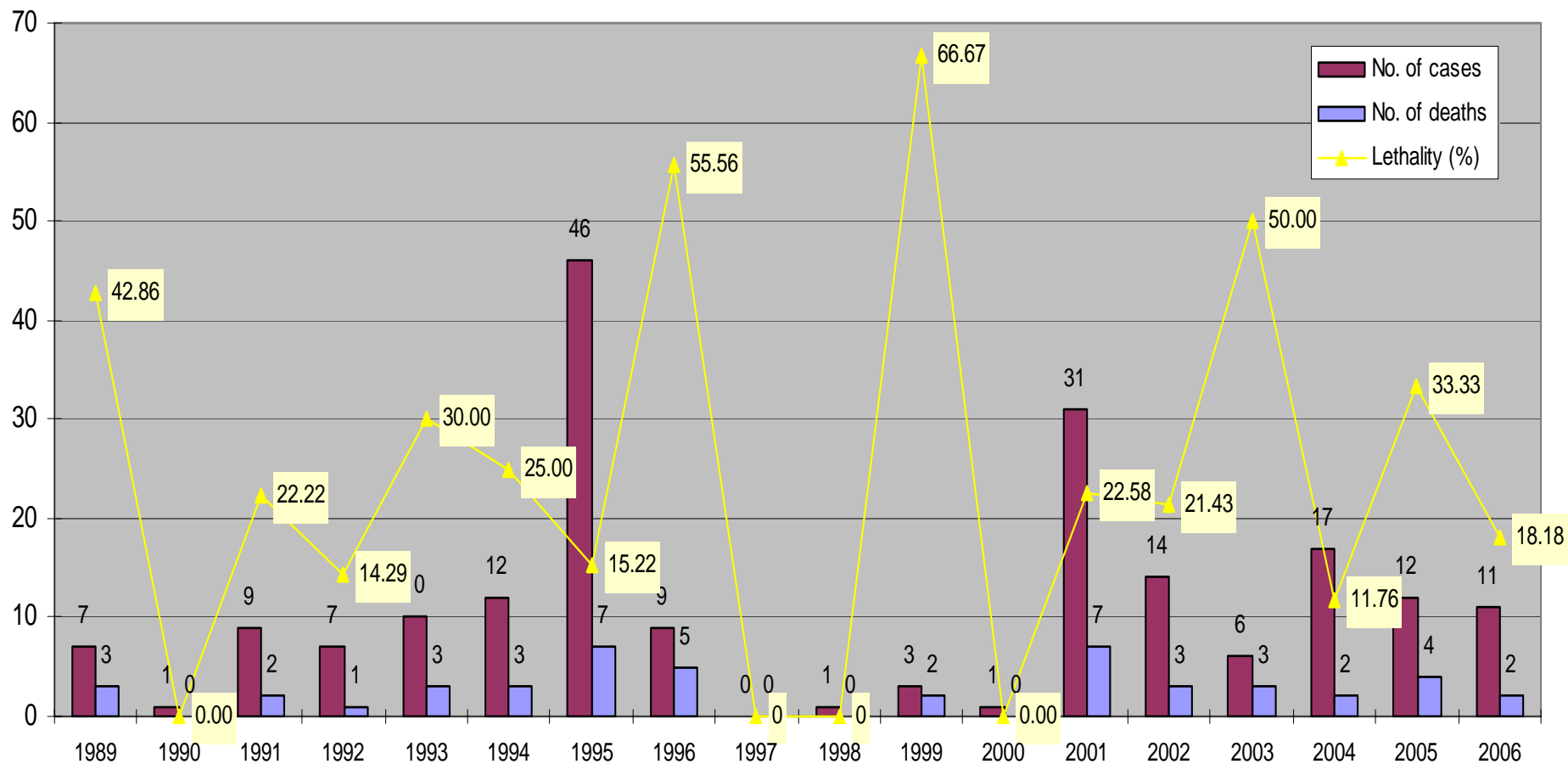
Cases of CCHF by years and gender in Kosovo, 1989 – 2006



Number of patients with CCHF by age-group, Kosova 1989-2006



Cases, deaths and lethality of CCHF in Kosova, 1989-2006



Average lethality = 23.83%

Day of hospitalization after onset of the disease

Days	No. of patients	%
2 – 7	86	43.65
8 – 10	45	22.84
> 10	66	33.51

Initially Diagnosis

Initially Diagnosis	No. of patients	%
Status febrilis	14	7.1
Intoxicatio alimentaris	11	5.5
Enterocolitis haemorrhagica	8	4.06
Colica Abdominalis	5	2.5
Ty. Abdominalis	7	3.5
Leptospirosis	5	2.5
Icterus febrilis	3	1.5
Hepatitit acuta virosa	3	1.5
Scarlatina	2	1.01
Measles	5	2.5
Epistaxis	9	4.5
Purpura trombocitopenica	4	2.03
Ulcus ventrikuli perforans	5	2.5
Sepsis meningococcica	6	3.04
Meningismus	7	3.5
CCHF	103	52.3

Common symptoms	No. of patients	%
High Temperature	197	100
Headache	182	92.3
Myalgia	184	94.4
Apathy	177	89.8
Nausea	197	100
Dizziness	171	86.8
Polyarthralgy	112	56.9

Hemorrhagic Syndrome	No. of patients	%
Petechie	136	69.3
HSC	141	71.6
Conjunctive Injection	176	89.3
Haemorrhagia in sclera	97	49.2
Epistaxis	123	62.4
Gingivorrhagia	167	84.7
Haematemesis	139	70.5
Melena	154	78.2
Metrorrhagia	68	34.5
Hematoperitoneum	26	13.2
Pleuritis haemorrhagica	19	9.6
Otorrhagia	6	3.05

Gastrointestinal manifestations	No. of patients	%
Vomiting	161	81.7
Diarrhea	97	49.2
Abdominal pain	143	72.5
Dry tongue	137	69.5

Hepatic manifestations	No. of patients	%
Hepatomegalia	145	73.6
Icterus	32	16.2
Hyperaminotransaminasemia	154	78.4

Cardiovascular manifestations	No. of patients	%
Bradycardia < 60/min.	92	46.7
Hypotension	121	61.4
Shock	64	32.4
Pericarditis haemorrhagica	17	8.6

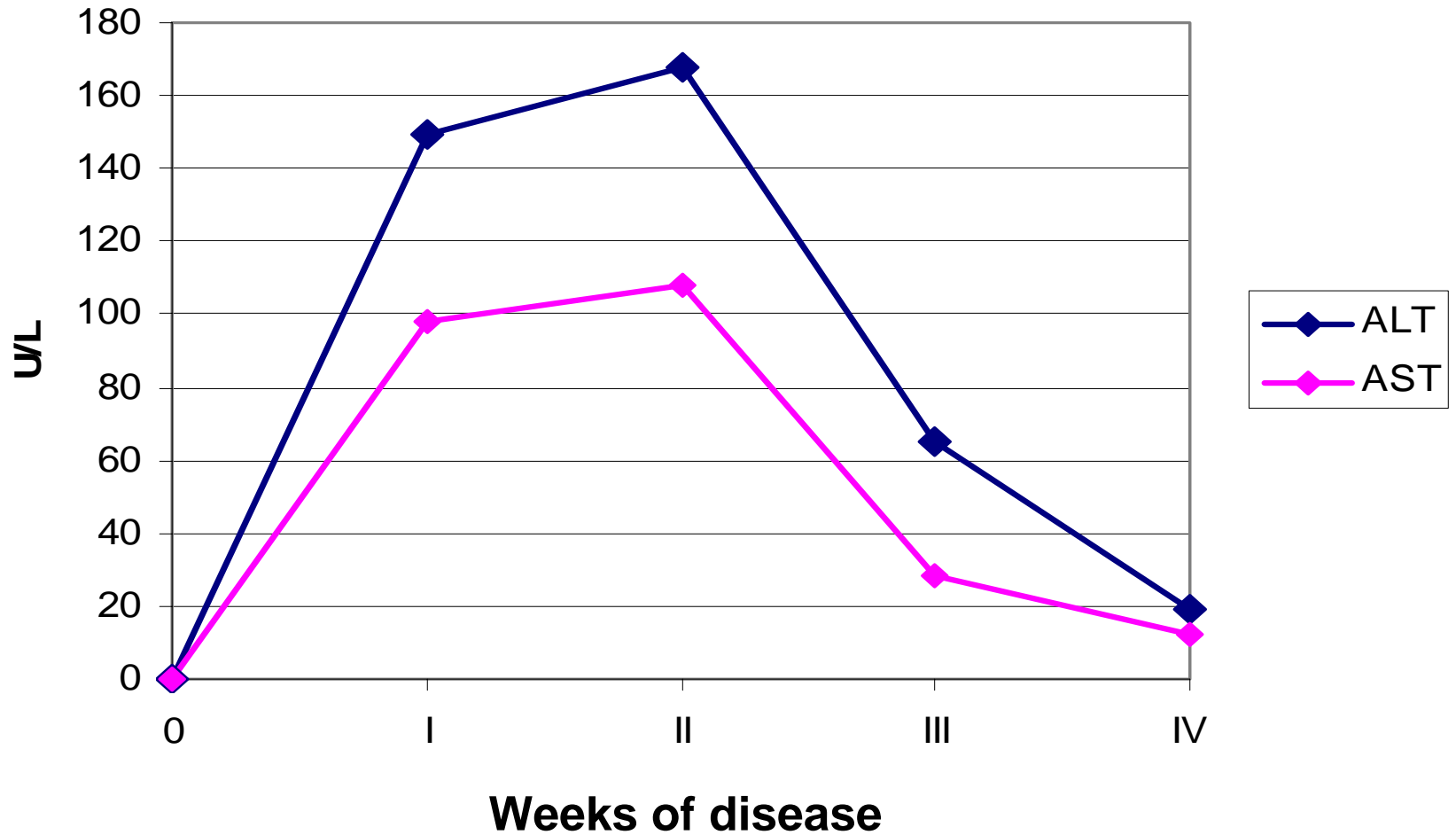
Pulmonary manifestations	No. of patients	%
Pneumonitis haemorrhagica	23	11.6
Pleuritis haemorrhagica	19	9.6
Pulmonary Edema	16	8.1

Renal manifestations	No. of patients	%
Lumbago	42	21.3
High level of urea and creatinin (BUN)	56	28.4
Oliguria	32	16.2
Haematuria	38	19.2
Albuminuria	74	37.5

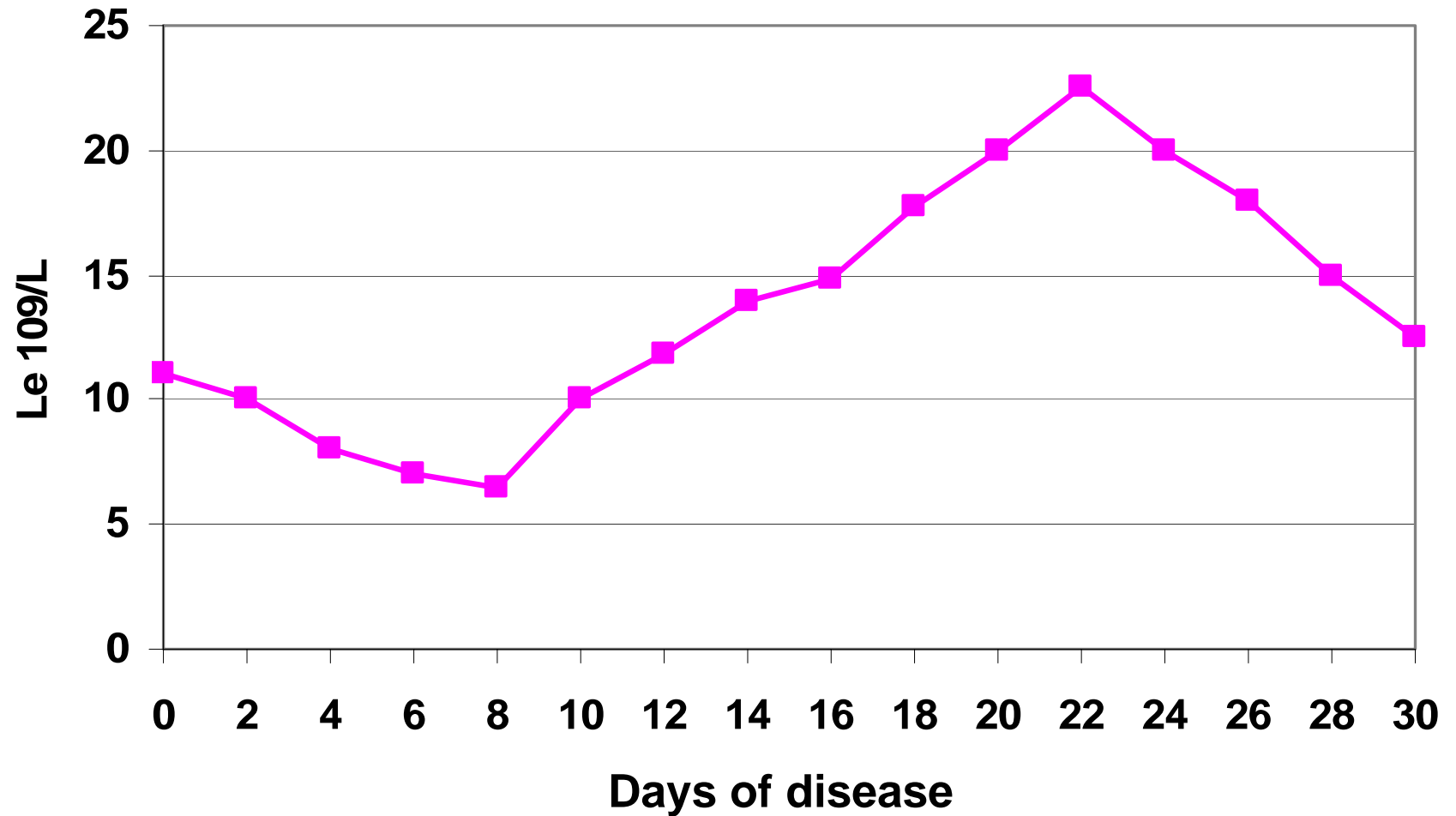
Neural manifestations	No. of patients	%
Eyesight Disorders	46	23.3
Diplopia	38	19.3
Meningial signs	68	34.5
Convulsions	21	10.6
Coma	23	11.6
Attempting Suicide	2	1.0

Specific manifestations	No. of patients	%
Otorrhagia	4	2.03
Herpes Febrilis	13	6.6
Haematoperitoneum	26	13.2
Pleuritis Haemorrhagica	19	9.6
Trombocytosis > 400 x10⁹	3	1.5
Pericarditis haemorrhagica	17	8.6

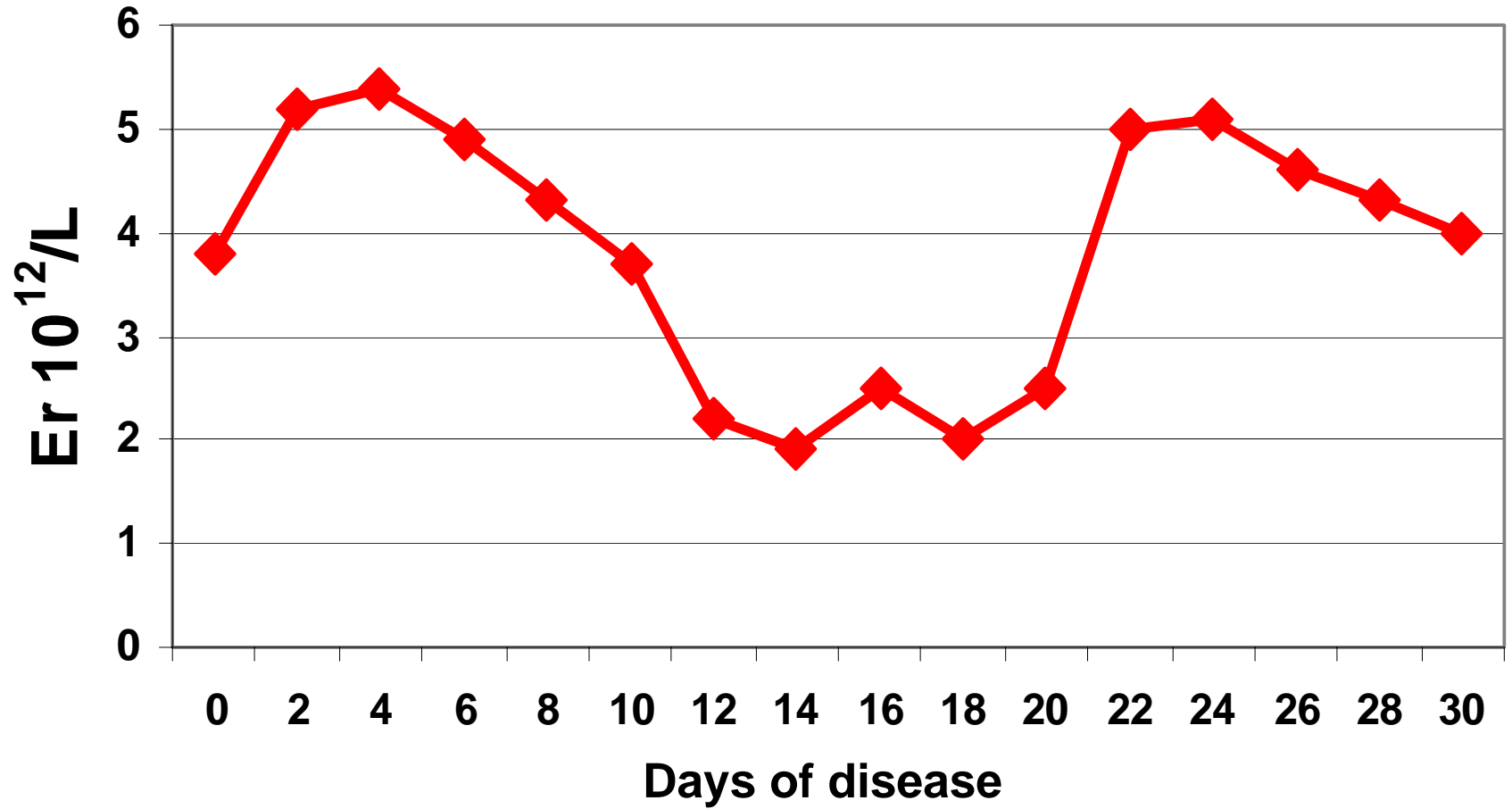
Value of Aminotransferasis in CCHF patients, Kosova 1989-2006



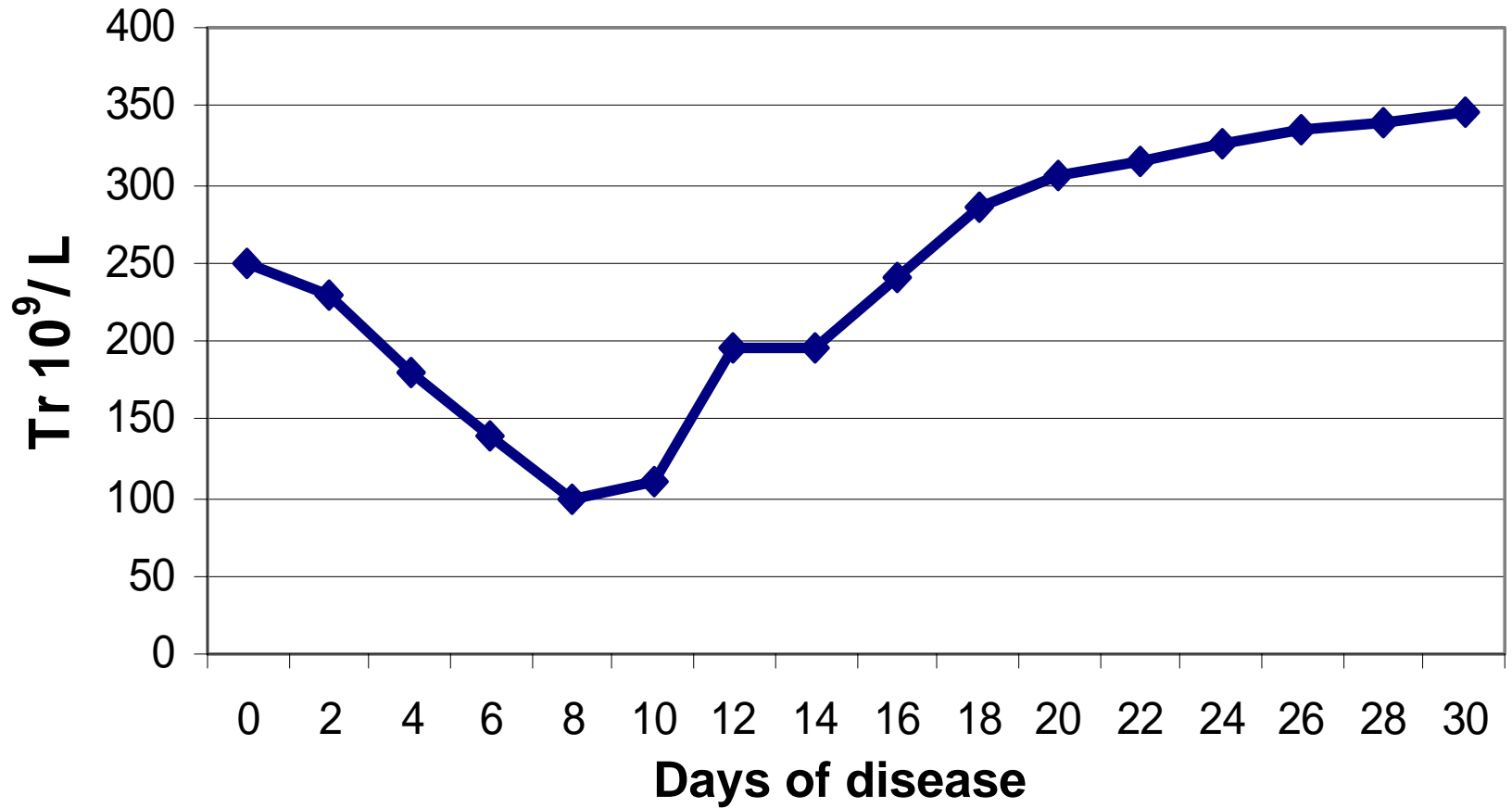
Value of Leukocytes in CCHF patients



Value of Erythrocytes in CCHF patients



Value of Thrombocytes in CCHF patients



Treatment regimen for IV Ribavirin

- **D 1-4:** Initial loading dose of 32mg/kg in bolus (up to 2 gr.), followed by 16mg/kg (up to 1.28 gr.) every 6^h for the first 4 days, diluted in 250cc of D5% and administered for 30-40min.
The cumulative dose could go up to 21.2 gr. for the first 4 days.
- **D 5-10:** 8mg/kg (up to 0.64gr.) every 8^h for subsequent 6 days,
The cumulative dose – up to 11.52 gr. for the last 6 days.
- **Total treatment time: 10 days**
- Number of cases treated with Ribavirin:
 - 14 cases (Male 9, Female 5)
- Application: on 4 – 7th day after onset of the disease
- Moderated effects
- Exitus letalis: 6 cases

Diagnosis is based on

- **Epidemiological data**
- **Clinical data**
- **Laboratorial data**
- **Serological tests – PAGT, ELISA, PCR**

Diagnostic difficulties

- **Sending serums out of country for analyses;**
- **Delays in reception of serological results;**
- **Application of therapy based on clinical and laboratorial data.**

















































































gag Abdominal
Abdominal blood







